

Crystal Accents Decoshapes

WATER-STORING GEL

ADD NEW DIMENSION TO YOUR DESIGNS WITH CRYSTAL ACCENTS EXPANDING GEL SHAPES

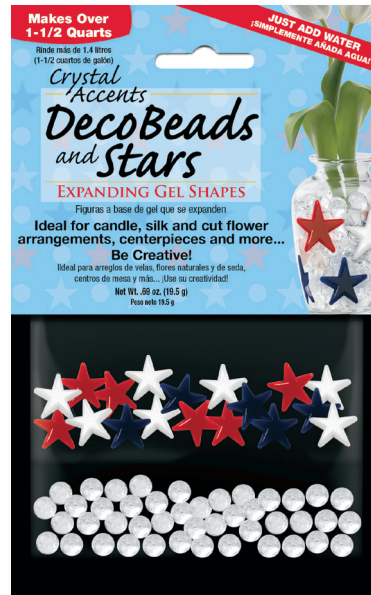


JRM's fabulous new line of water-storing gel shapes are the ideal accent for your creative designs. These gel shapes are non-toxic, eco-friendly, safe and easy to use.

- Highlight any Deco Bead or Crystal Accent product
- Float in vases for a new look
- Ideal for holiday themed displays

Deco Beads and Stars

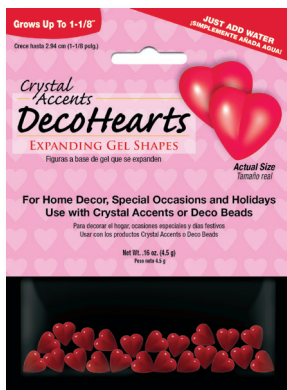
Bold color, shape and texture: Get it all in this mix of red, white and blue gel stars with Deco Bead clear gel beads. Makes 1-1/2 quarts of beads.



Item#	Description	UPC	Case Pack
DS-H	Heart Shapes	030541501759	24
DS-R	Star Shapes	030541501766	24
DS-S	Shell Shapes	030541501773	24
DS-M	Mixed Case -Shapes	030541501780	24
DS-CH	Heart/Bead Combo	030541500158	24
DS-CR	Star/Bead Combo	030541500165	24
DS-CM	Mixed Case-Heart/Star combo	030541500172	24
DS-H05	5 oz. Jar - Hearts	030541500035	12
DS-R05	5 oz. Jar - Stars	030541500042	12
DS-S05	5 oz. Jar - Shells	030541500059	12
DS-M05	5oz. Jar-4 ea. Hearts, Stars and Shells	030541500066	12

Deco Hearts

Add brilliant color and fun with these gel shaped hearts, which expand to 1-1/8" in size.



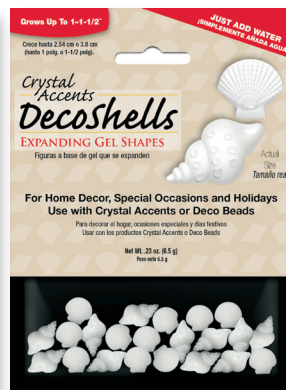
Deco Stars

From patriotic to sports-themed displays, the gel shaped stars—in red, white and blue—make a statement, growing to 1-1/2" in size.



Deco Shells

Relaxed and nature-inspired, these beautiful, textured shells expand to 1-1/2" in water.



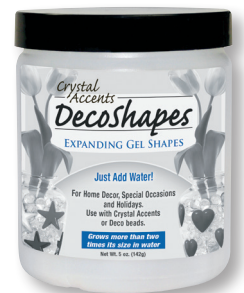
Deco Beads and Hearts

The Combination of clear Deco Bead gel beads and bright red gel hearts offer a host of creative display options. Makes 1-1/2 quarts of beads.



Deco Shapes

The 5-oz. volume-sized jars of gel shapes are ideal for use on their own or combined with other Deco Bead products for maximum versatility.



Visit JRM online to learn more about our seasonal product selections.



www.soilmoist.com
JRM Chemical, Inc. 4881 NEO Parkway, Cleveland, OH 44128.
1-800-962-4010 Fax: 216-475-6517

Form 650 rev. 12/13

